

A large, faint watermark of the Farmingdale State College seal is visible in the background. The seal is circular and contains the text "FARMINGDALE STATE COLLEGE" around the perimeter and "SOME ALL ONE IS" in the center. The background is a dark teal color with a network of light blue lines and dots, resembling a molecular or digital structure.

Farmingdale State College

# TOWN HALL

F E B R U A R Y 2 0 2 5

# The First Six Months – Fun Facts

- **29** Welcome/greetings
- **28** FSC Campus events
- **27** Corporate meetings
- **32** Department meetings
- **13** Athletic events attended
- **9** Legislator introductions
- **6** Virtual SUNY meetings
- **5** Galas (2 added pounds)
- **1** Convocation
- **1** Legislative Breakfast
- **1** Student protest



# Initial Goals

- Enhance opportunities for research & creative activities
- Grow external research/creative activity grants
- Deepen outreach to industry & government
- Build graduate programs
- Extend geographic range for active (enrollment) recruitment
- Consider opportunities for residence halls and student housing

# 2024-25 FSC Initiatives

- Visiting Scholars Program
- Proposal Incentive Program (PIP)
- Indirect Costs Distribution
- Open Access Publications Fund
- Commencement at Nassau Coliseum (spring)
- Annual President/Provost Academic Department Visits
- President Non-academic Department Visits
- President's Transition Team
- Ombuds Team
- Huntington Traffic Study
- Public Campus Art
- Cradle of Aviation Partnership
- Viscardi Center Partnership
- HS Principals Newsletter



# President's Transition Team

- Tom Azzara
- Daniel Daugherty
- Danielle DiMuro
- Dominic Esposito
- Karen Gelles
- Marya Howell Carter
- Dorothy Hughes
- Mimi Johnson
- Tim McDermott
- Lukas Miedreich
- Jairo Orozco
- Peter Park
- Jeanne Radigan
- Frank Rampello
- Janice Rivera
- Jeanne Soto
- Rena Varghese
- Sean Wilson

# President's Transition Team

- Facilities and grounds
- Academic (masters) programs
- Scholarship and creative activities
- Athletics and non-academic programs
- Community partnerships/collaborations
- Diversifying faculty
- Strategic planning status
- Student support



# President's Transition Team: Select Recommendations

## Facilities & Grounds

- Updates – Increase communications
- Review efficient use of current space

## Academic Programs (Masters)

- For new and proposed programs, ensure resource and faculty needs
- Align programs with industry needs

# President's Transition Team: Select Recommendations

## Enhancing Scholarship & Creative Activities

- Encourage and facilitate internal and external (corporate, etc.) collaborations
- Develop seed funding programs
- Enhance support for Office of Sponsored Programs
- Find paths to increase time available for scholarship activities

## Athletics & Alumni

- Maintaining and upgrading facilities
- Limited resources – keep eye on appropriate funding and external support
- Responsiveness of alumni in competitive environment
- Accuracy/updates re: alumni



# President's Transition Team: Select Recommendations

## Community Partnerships & Collaborations

- Grow collaboration of MarComm and deans/chairs
- Encourage local business to offer more “FSC Perks”

## Diversifying Faculty

- Examine current hiring practices
- Enhance training of search committees
- Review current support for assisting in diversifying faculty
- Support visa costs for international faculty

# President's Transition Team: Select Recommendations

## Strategic Plan Status

- Clarify roles and responsibilities of CPRA
- Better communicate the plan to campus - stakeholders and responsibilities
- Clarify the intent of “Grow Our Own” program
- Note: Separate town hall being planned for CPRA

## Student Support

- Strengthen communication pipelines across departments and programs
- Review how we advise students and roles of AAlC, faculty, etc.
- Consider part-time hire of psychiatrist
- Enhanced tenure equation to better include service such as tutoring, advising, research mentorship, etc.
- Growing use of third-party software (not supported by IT)



# Searches Underway

- Vice President Student Affairs
- Provost and Senior Vice President Academic Affairs
- Director of Strategic Initiatives, Enrollment Management
- Assistant Director, Sponsored Programs
- Counselor of Prestigious Scholarships, RAM

# Academic Program Development

- **Approved New Program**

- Modern Manufacturing and Quality Assurance Certificate Program (30 ch)

- **New Program Proposal Announcements / Letters of Intent**

- BS Public Administration and Policy
- MS degree in Regulatory Affairs/Quality Assurance
- BS Applied Physics

- **Program Revisions**

- BT to BS Urban Horticulture ready for external review
- BS in Facilities Management to independent degree



# Microcredentials Expansion

- 257 “Badges” issued since Jan. 2020
  - 61% shared to an online profile
- 13 new Microcredentials launched in 2024
- New Microsite developed and launched in 2024



ADVANCED SPEAKING  
AND WRITING

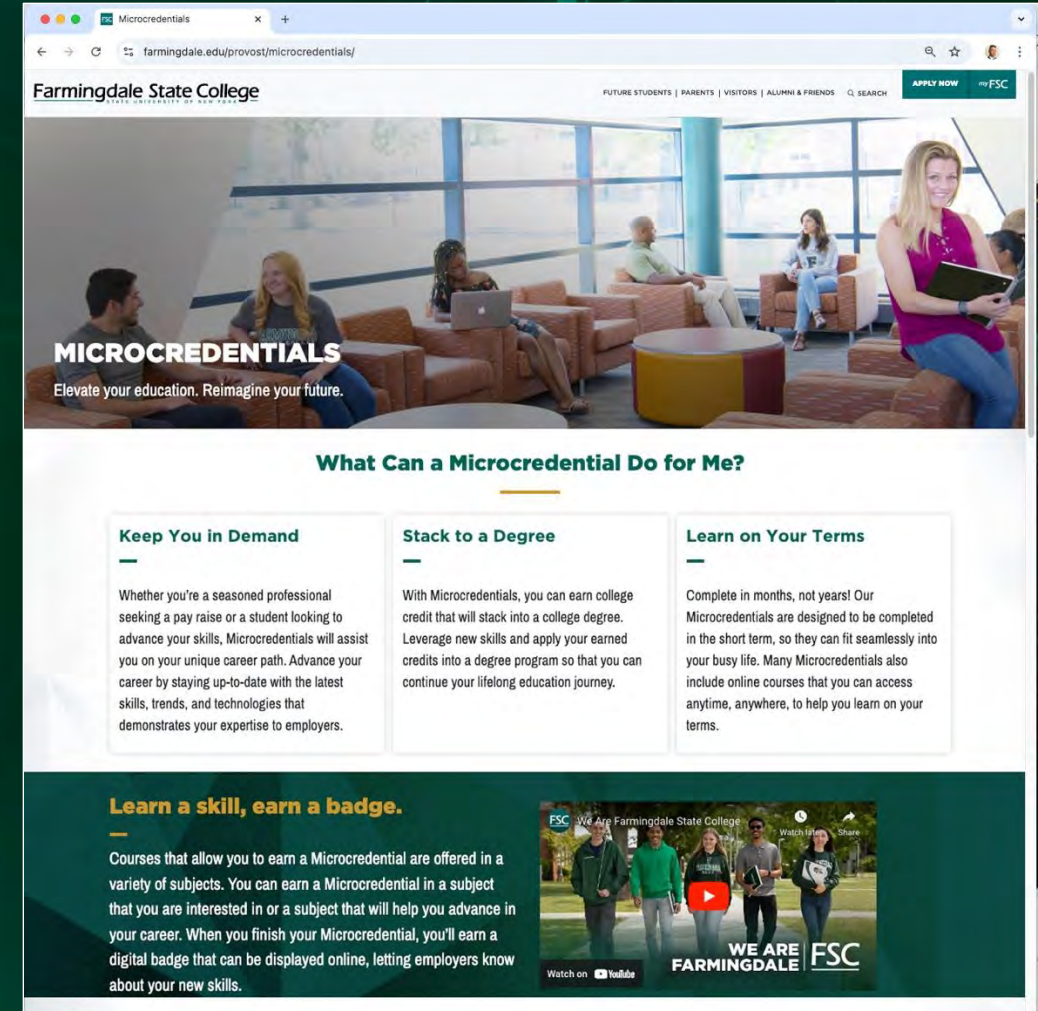


COMMUNITY AND  
CIVIC ENGAGEMENT



GEOTHERMAL ACCREDITED  
INSTALLER

TOWN HALL | FEBRUARY 2025





# New Grants

- **EMERGE:** Education Milestones in Enrollment, Retention & Graduation Excellence
  - \$3 Million U.S. Department of Education grant over 5 years
  - Creating Office of First Year & Transfer Year Experience
    - Director appointed, searches for Assistant Director, Academic Coach, Wellness Coach
  - Active selection of initial cohort underway
  - Curricular innovations for Fall 2025
    - College-readiness, first-year learning communities, math/english co-requisite courses





# External Grant Funding: Applications

Agency Type	2024	2025*
New York State	6	4
Federal	3	13
Competitive Private	1	2
SUNY	5	1
<b>Total</b>	<b>15</b>	<b>20</b>

\*2025 is the 6 Month Total from 07/01/2024 to Date

# External Grant Funding: Dollar Amount

Agency Type	2024	2025*
New York State	\$2,954,427	\$1,142,033
Federal	\$824,972	\$4,960,470
Competitive Private	\$224,814	\$18,000
SUNY	\$91,360	\$400,000
<b>Total</b>	<b>\$4,095,573</b>	<b>\$6,520,503</b>

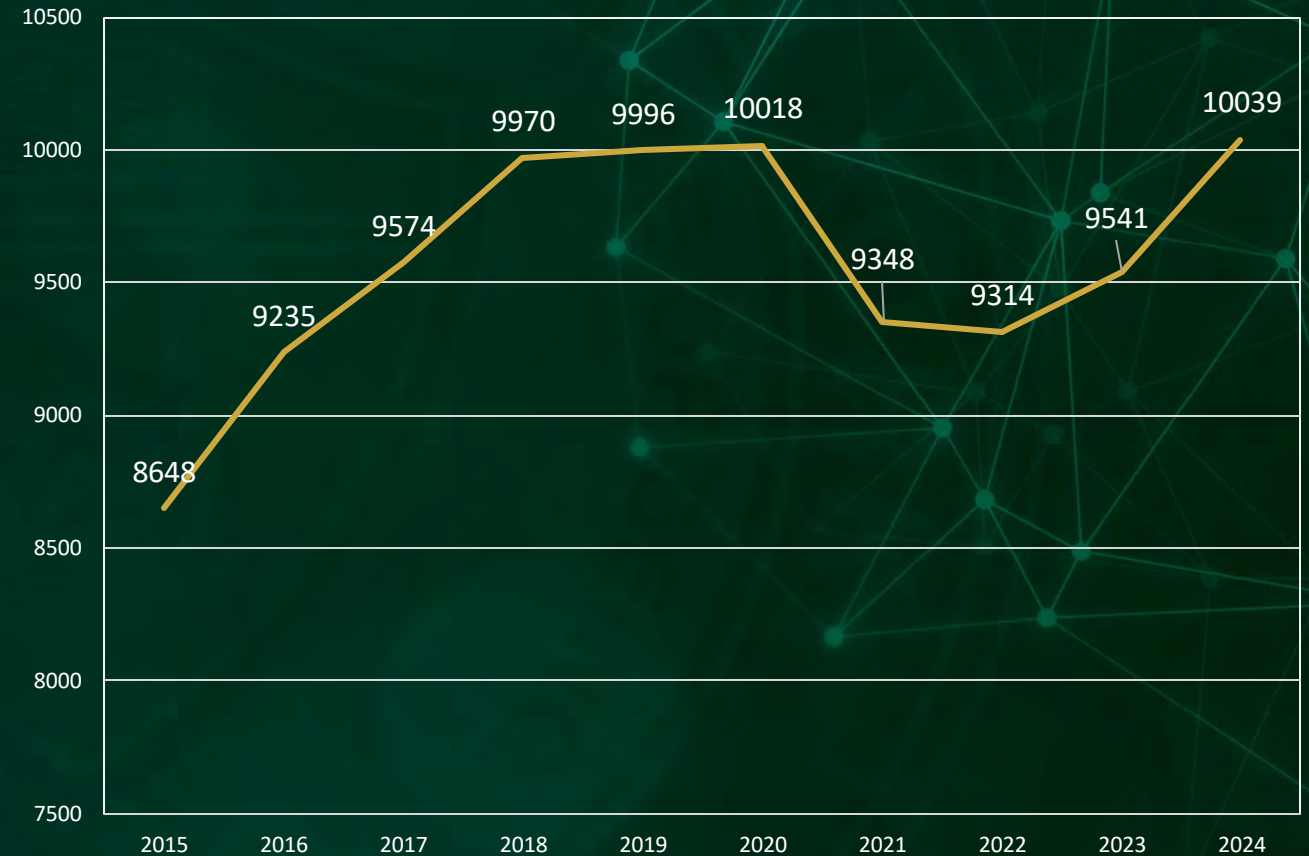
\*2025 is the 6 Month Total from 07/01/2024 to Date



# Enrollment Trends 2015 – 2024

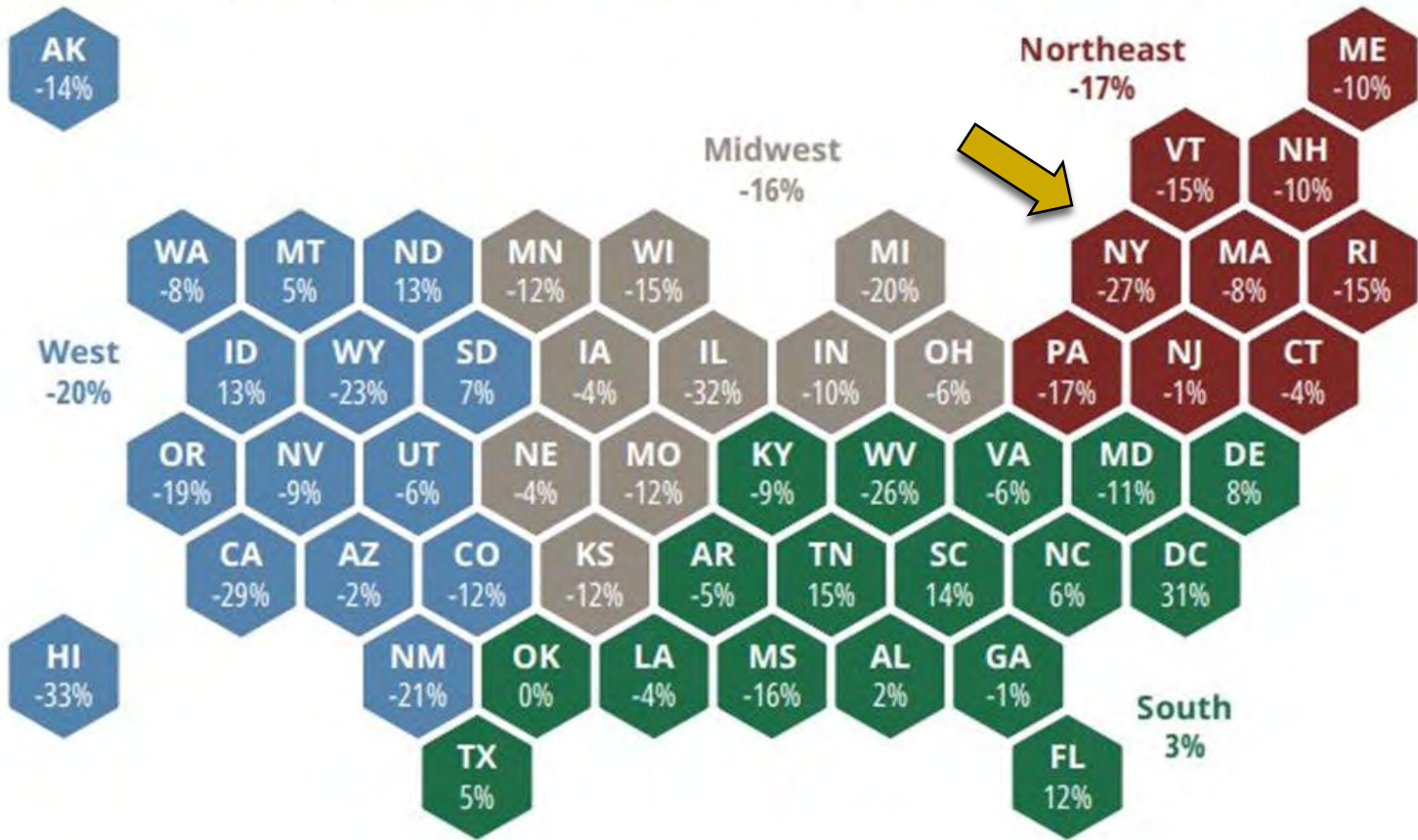
FSC enrollment is up –  
**16%** over the past decade

## 10 Year Enrollment Trend



# The Enrollment Cliff

Figure 17. Projected percent change in high school graduates, 2023 to 2041

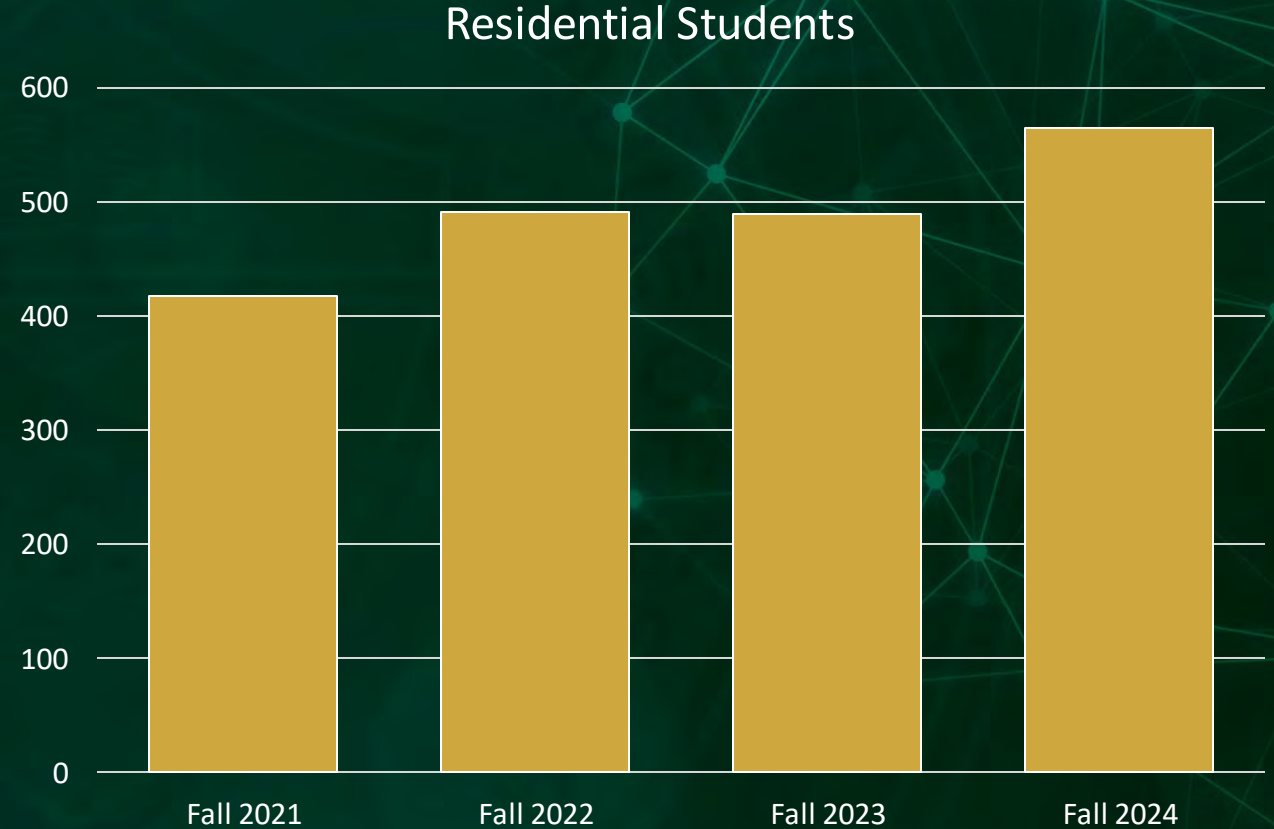




# Campus Housing

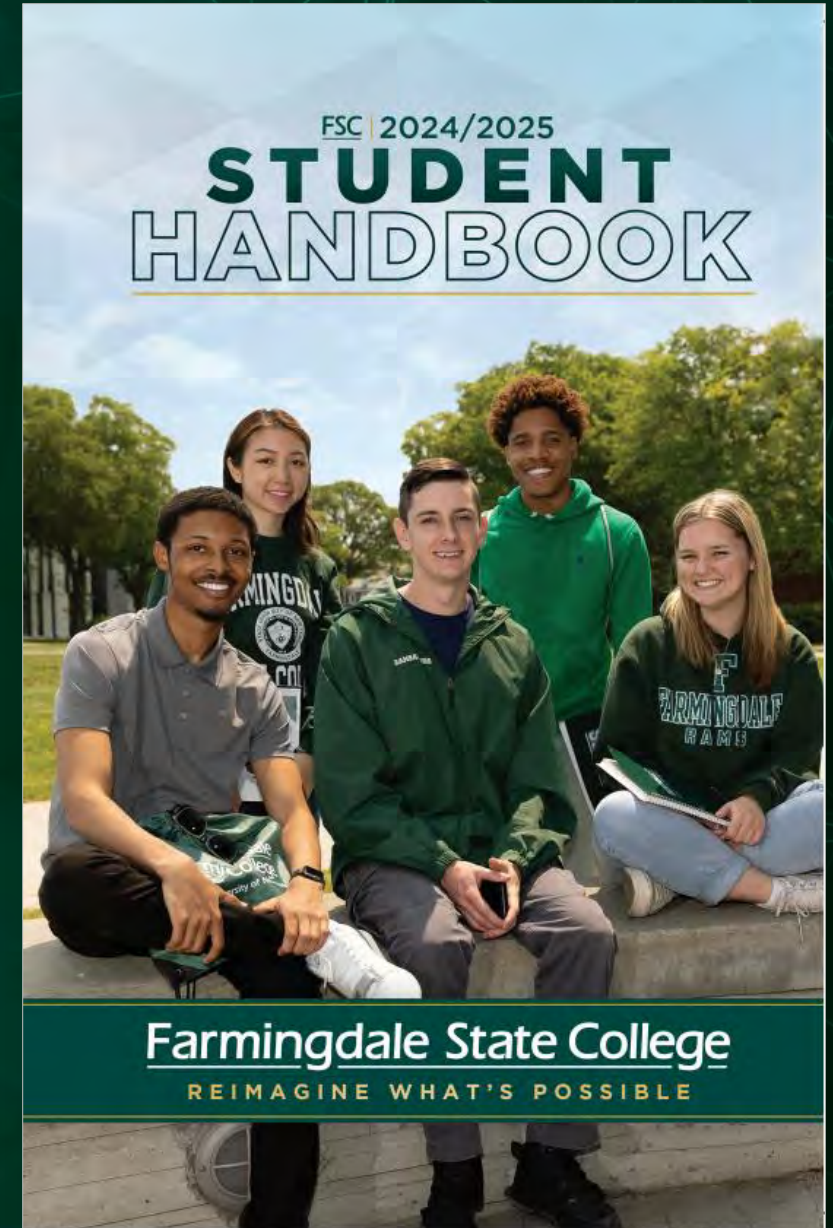
## Re-Opening of Dewey Hall Fall 2024

- **565** resident students
- **16%** increase 2023-2024



# Student Affairs

- New Student Handbook
  - Updated Student Code of Conduct
- Office of Advocacy, Prevention, and Outreach
  - Relaunched the Alcohol and Drug Abuse Prevention Team
  - Hired Mental Health Prevention Specialist
- Title IX
  - Ensured compliance with Department of Education's 2024 Rule
    - new training programs, policies, and procedures
    - Note – reverting to 2020 rule
  - Launched NYS Sexual Harassment Prevention Training





# Athletics

- Increasing out of state recruitment
  - 8 currently and 20+ for 25/26
- Increasing community engagement
  - 30+ community service programs
- Academic excellence
  - GPA 3.0 or higher for 13 teams
- Skyline Conference Presidents Cup
  - 5<sup>th</sup> time in history
- Facilities improvements
  - Locker rooms, weight training facilities, film room, PT space
- 77 High schools used our athletic facilities
- 9 high school championships on campus this year
  - 20,000+ attendees





# Diversity, Equity, & Inclusive Excellence

## New Programming

- DEI Innovation Grant, 1<sup>st</sup> cohort
- Women's Affinity Group
- Day of Belonging:  
Celebrating What Unites Us
- Indigenous Knowledge  
Beyond Borders
- STEM Diversity Summit

## Honors

- 2024 Higher Education Excellence in Diversity (HEED) Award – 3<sup>rd</sup> year
- \$3M Department of Education Grant
  - Developing Hispanic-Serving Institutions Program, authorized by Title V
- 1<sup>st</sup> President's DEI Award Ceremony



# Capital Planning: Major Projects

- Roosevelt Hall
  - Progress improving – August 2025
- Sinclair Hall
  - Demolition phase – May 2027
- Laffin Hall Welcome Center
  - Spring – September 2026
- Campus Commons
  - Spring – January 2027
- Thompson Hall
  - Spring – September 2027
- Computer Science Building
  - Summer – October 2028





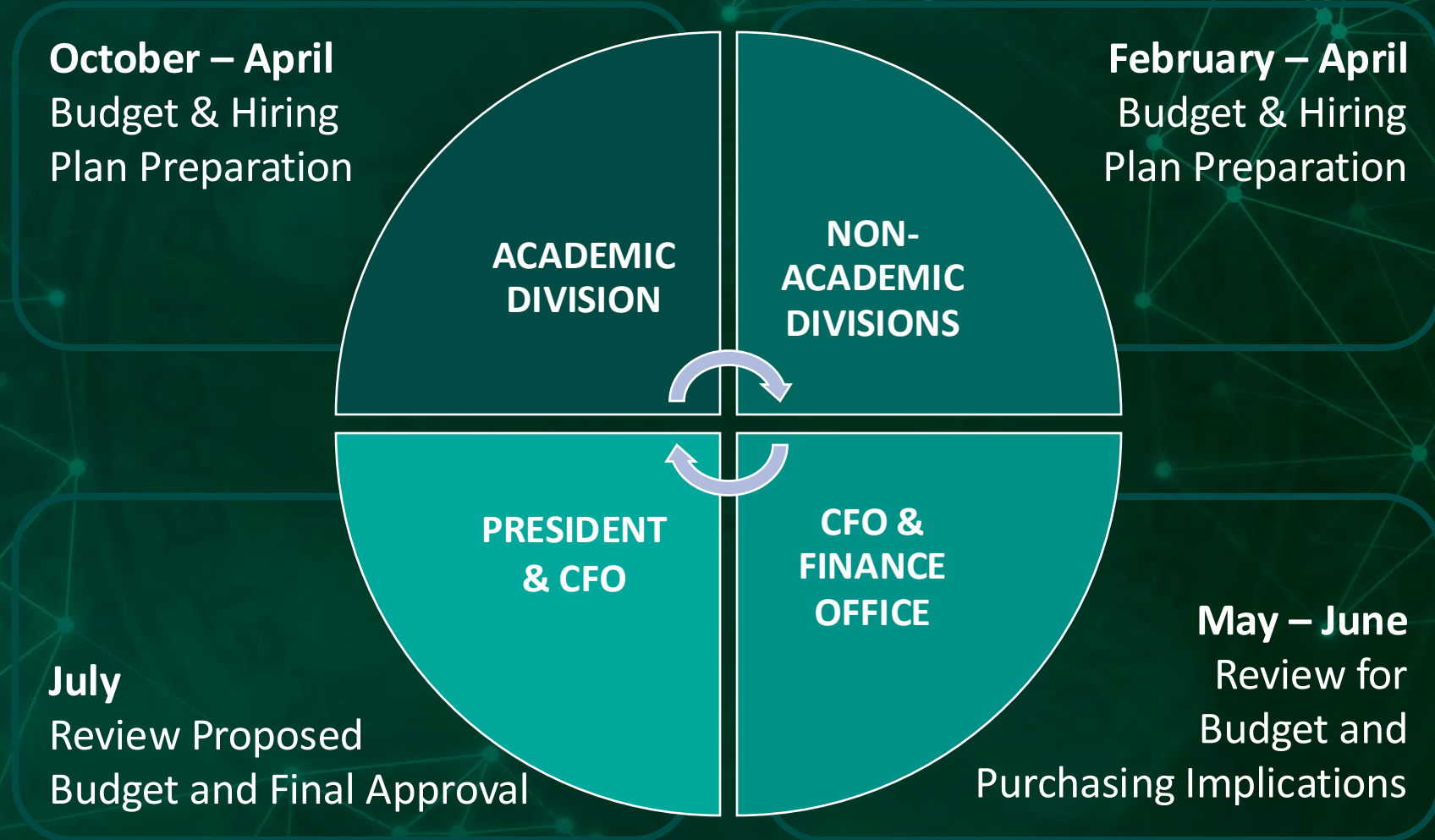
# Capital Planning: Underway and Planned

- Gleeson Hall: mechanicals & windows
- Greenhouse renovation
- Lupton windows
- UPD partial renovation & emergency ops center
- Walkways & planting areas
- Service Building renovation
- Steam infrastructure





# Budget Process Cycle





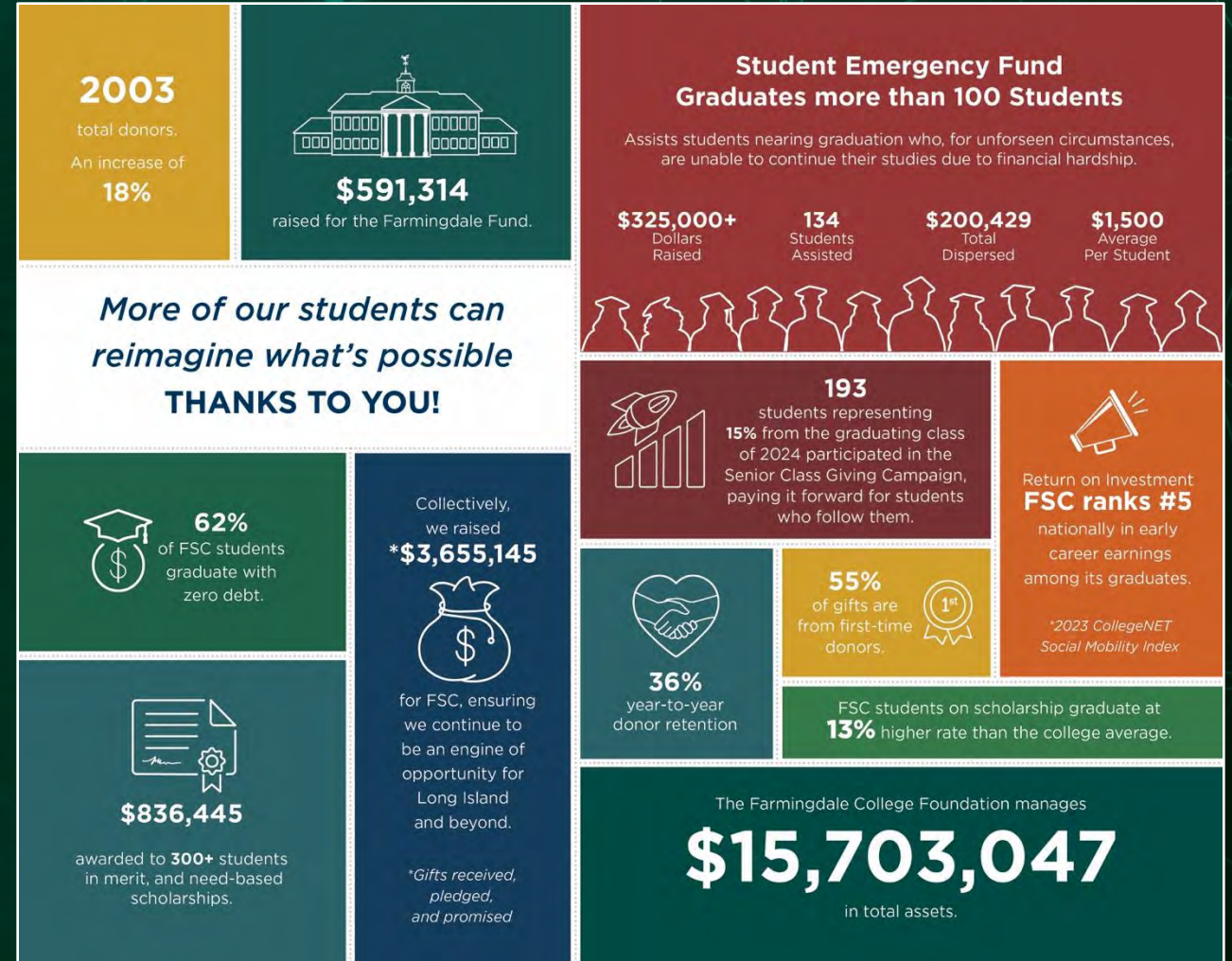
# The Farmingdale College Foundation

**\$15.7** Million

- Total assets
  - Up from *\$7.7 Million* in 2020

**\$3.6** Million

- Raised in fiscal year 2024
  - Up from *\$813,804* in 2020





# Did you know?

## Projects funded by philanthropy

- Team Locker Rooms (Nold)
- Student-Managed Investment Fund & Trading Room (Business)
- Dental Hygiene Sensory Care Unit (Gleeson)
- Ram-Bo Statue & Bench
  - With SGA





# Did you know?

## Scholarships funded by philanthropy

- Strain Stars New Hour Scholarship
  - Students impacted by incarceration
- Ferrari & Pelletiere Memorial Scholarship
  - Farmingdale High School students
  - In memory of teachers lost in the 2023 bus accident
- John Brooks '77, Prezant Family Scholarships
  - Students with disabilities





# Reimagine What's Possible 2.0

## New Creative

- Students in learning environments
  - “We do the work”
- Reflection of our student body
  - Industrious & ambitious personality
- Key Strategic Drivers
  - Career outcomes
  - Diversity





# Where you'll see it ... *More to Come*





# President's Inauguration

- Investiture Ceremony

Friday, April 11 at 11 a.m. - *Nold Hall*

- Reception to follow  
*Campus Center Ballroom*

- Inauguration Week - April 7-13

- Campus-wide activities and events celebrating education, discovery, and service

SAVE  
THE  
DATE



THE INAUGURATION OF  
**Robert S. Prezant, PhD**

10<sup>TH</sup> PRESIDENT OF  
FARMINGDALE STATE COLLEGE

Friday, April 11, 2025, 11 a.m.

FARMINGDALE STATE COLLEGE  
2350 Broadhollow Road  
Farmingdale, New York 11735

*More event details coming soon.*



A large, faint watermark of the Farmingdale State College seal is visible in the background. The seal is circular and contains the text "FARMINGDALE STATE COLLEGE" around the perimeter and "COME ALL ONE IS CAPABLE" in the center. The background is a dark teal color with a network of light blue lines and dots, resembling a molecular or digital structure.

Farmingdale State College

# TOWN HALL

F E B R U A R Y 2 0 2 5