

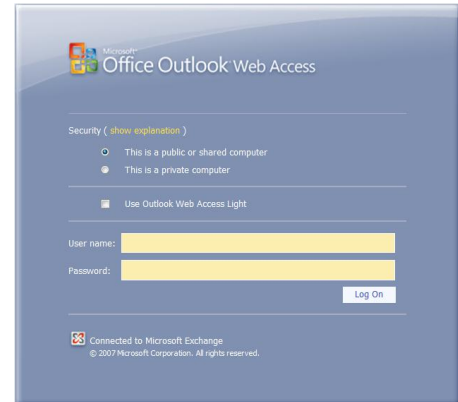
## Farmingdale Email Account – Outlook Web Access

To access your Farmingdale email from any web browser type: ***mail.farmingdale.edu***

You will then see the login page for Outlook Web Access.

- **Username:** the first 6 letters of your last name, first initial, middle initial.
- **Password:** the word “farm” followed by the last 4 digits of your ss#.

If you’re logging in for the first time, call the Helpdesk to have your password unlocked.

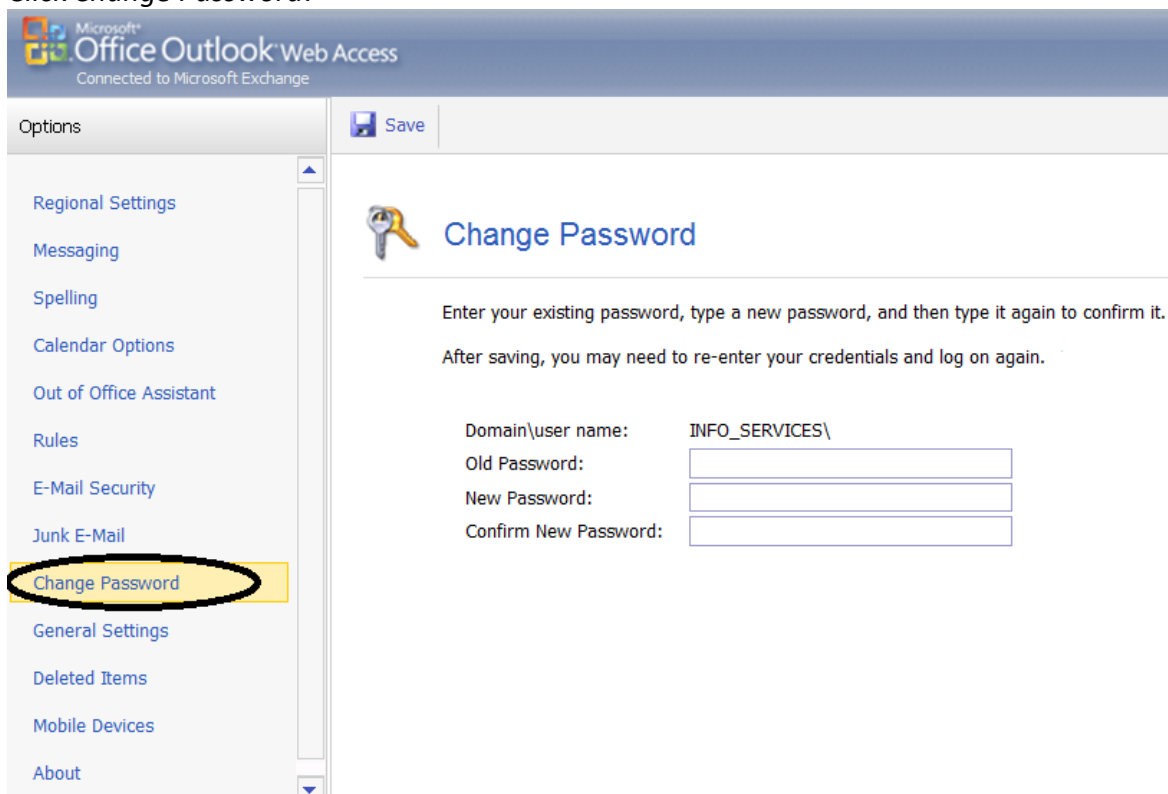


### How to Change Your Email Password

Once you login to Outlook Web Access (OWA), click *Options* which is located in the top right corner of the OWA window.



Click *Change Password*.



If you have any questions, contact the Farmingdale Helpdesk at (631) 420-2754 or email [helpdesk@farmingdale.edu](mailto:helpdesk@farmingdale.edu).